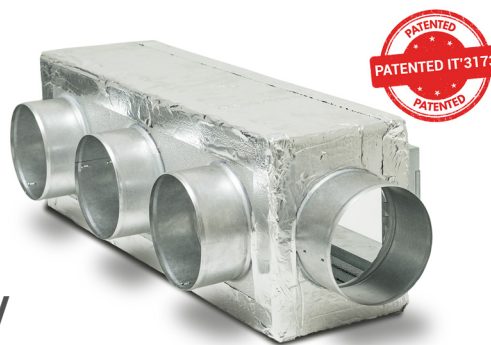


CLIMABOX PLENUM DI DISTRIBUZIONE PER 2 - 3 - 4 - 5 - 6 ZONE



**Plenum universale per macchine canalizzate /
Compatibile con sistemi OPAL**

CARATTERISTICHE

Materiale:

- struttura in acciaio zincato, isolato con polietilene con un foro pre-tranciato Ø 150 mm maschio su un lato corto e un foro pre-tranciato Ø 150 mm femmina sull'altro lato corto;
- due pannelli pre-isolati (frontale e posteriore);
- 2, 3, 4, 5 o 6 collari MASCHIO / FEMMINA per tubo flessibile;
- flangia BREVETTATA estensibile sia in altezza che in lunghezza in acciaio zincato.



**VIDEO TUTORIAL ISTRUZIONI
DI MONTAGGIO**

PARTICOLARITÀ DEI COLLARI CON Ø 150 mm

Nella fornitura del **CLIMABOX - CLIMAZONE** sono compresi dei collari Ø 150 mm che possono essere regolati dall'installatore sia come misura maschio che come misura femmina. Nel caso di collegamento diretto al tubo flessibile il collare dovrà essere ripiegato nei fori che rendono il Ø del collare più stretto, mentre **nel caso di installazione delle serrande del sistema OPAL sarà necessario ripiegare il collare nei fori che rendono il Ø più largo.**



IMPIEGO

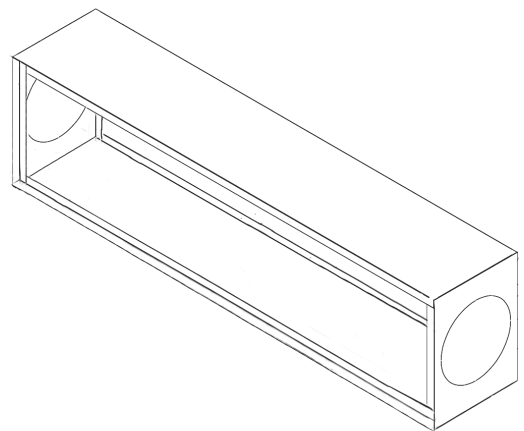
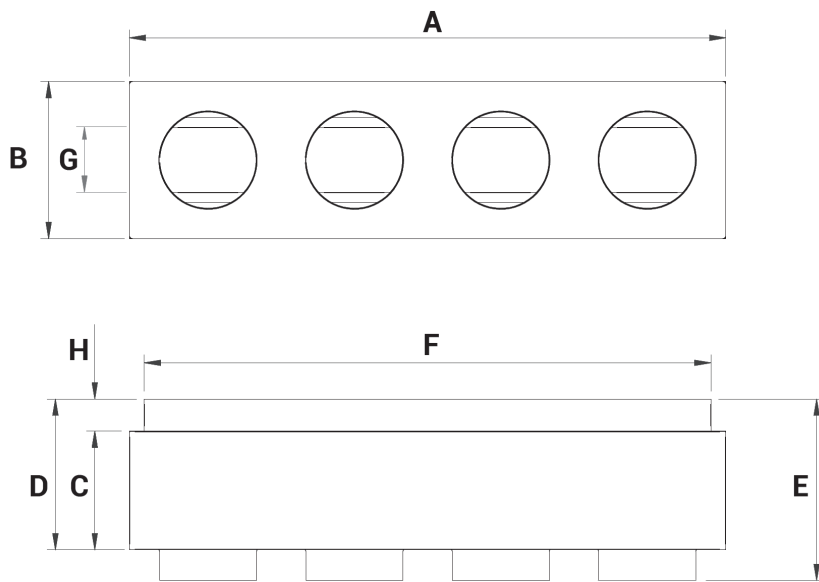
Installazione su macchine canalizzate per il condizionamento e il riscaldamento dell'aria.

ACCESSORI

Collare per by-pass laterale del box Ø 150 mm maschio / femmina.

DIMENSIONI CLIMABOX

| Modelli CLIMABOX | Dimensioni CLIMABOX | | | | | Flangia | Estensione della flangia | | | | H | Numero attacchi massimi regolabili Ø 150 mm maschio / femmina |
|--|---------------------|-----|-----|-----|-----|-----------|--------------------------|------|------------|-----|----|--|
| | A | B | C | D | E | | F lunghezza | | G altezza | | | |
| | | | | | | | Estensione | | Estensione | | | |
| | min | | max | | min | | max | | | | | |
| CLIMABOX-1A | 750 | 275 | 240 | 275 | 350 | FLANGIA A | 400 | 675 | 130 | 200 | 37 | 3 |
| CLIMABOX-1B | 750 | 275 | 240 | 275 | 350 | FLANGIA B | 400 | 675 | 100 | 160 | 37 | 3 |
| CLIMABOX-1C | 750 | 275 | 240 | 275 | 350 | FLANGIA C | 330 | 620 | 130 | 200 | 37 | 3 |
| CLIMABOX-2A | 910 | 275 | 240 | 275 | 350 | FLANGIA A | 400 | 760 | 130 | 200 | 37 | 4 |
| CLIMABOX-3A | 940 | 275 | 240 | 275 | 350 | FLANGIA A | 570 | 865 | 130 | 200 | 37 | 4 |
| CLIMABOX-4A | 940 | 275 | 240 | 275 | 350 | FLANGIA A | 570 | 865 | 145 | 225 | 37 | 4 |
| CLIMABOX-5A | 1175 | 275 | 240 | 275 | 350 | FLANGIA A | 570 | 1100 | 130 | 200 | 37 | 5 |
| CLIMABOX-5B | 1175 | 275 | 240 | 275 | 350 | FLANGIA B | 570 | 1100 | 100 | 160 | 37 | 5 |
| CLIMABOX-6A | 1440 | 300 | 240 | 275 | 350 | FLANGIA A | 740 | 1365 | 145 | 225 | 37 | 6 |
| CLIMABOX-6B | 1440 | 300 | 240 | 275 | 350 | FLANGIA B | 740 | 1365 | 100 | 160 | 37 | 6 |
| EACO PLUS Collare maschio / femmina Ø 150 mm (aggiuntivo per attacco laterale) | | | | | | | | | | | | |
| Collare maschio / femmina Ø 150 mm (aggiuntivo per attacco frontale) | | | | | | | | | | | | |



Tutte le misure sono espresse in mm.

INDIVIDUA IL TUO MODELLO CLIMABOX

1-Nelle pagine seguenti individua la tua marca di macchina canalizzata tra le seguenti:

DAIKIN

STORM

Unical®

FE Fuji Electric

SAMSUNG

Haier®

TOSHIBA

THERMOMEC

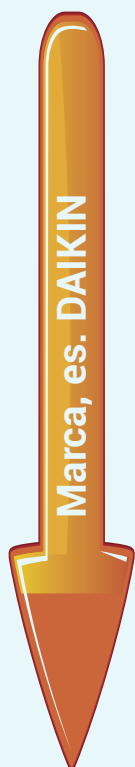
FUJITSU

VIESMANN

Panasonic

SHARP

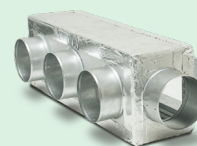
MITSUBISHI ELECTRIC



2-individua il tuo modello



3-hai trovato il tuo modello CLIMABOX



| Marca | MODELLO | MODELLO CLIMABOX | CODICE CLIMABOX |
|--------|-----------|------------------|-----------------|
| DAIKIN | FBA-A 100 | 6A | KIT0001500 |
| DAIKIN | FBA-A 125 | 6A | KIT0001500 |
| DAIKIN | FBA-A 140 | 6A | KIT0001500 |



| Marca | MODELLO | MODELLO CLIMABOX | CODICE CLIMABOX |
|--------|--------------|------------------|-----------------|
| DAIKIN | FBA-A 100 | 6A | KIT0001500 |
| DAIKIN | FBA-A 125 | 6A | KIT0001500 |
| DAIKIN | FBA-A 140 | 6A | KIT0001500 |
| DAIKIN | FBA-A 35 | 1A | KIT0001000 |
| DAIKIN | FBA-A 50 | 1A | KIT0001000 |
| DAIKIN | FBA-A 60 | 3A | KIT0001200 |
| DAIKIN | FBA-A 71 | 3A | KIT0001200 |
| DAIKIN | FDXM-F 25 | 1A | KIT0001000 |
| DAIKIN | FDXM-F 35 | 1A | KIT0001000 |
| DAIKIN | FDXM-F 50 | 5A | KIT0001400 |
| DAIKIN | FDXM-F 60 | 5A | KIT0001400 |
| DAIKIN | FNA 25 A | 2A | KIT0001100 |
| DAIKIN | FNA 35 A | 2A | KIT0001100 |
| DAIKIN | FNA 50 A | 5A | KIT0001400 |
| DAIKIN | FNA 60 A | 5A | KIT0001400 |
| DAIKIN | FNQ 25 A | 2A | KIT0001100 |
| DAIKIN | FNQ 35 A | 2A | KIT0001100 |
| DAIKIN | FNQ 50 A | 5A | KIT0001400 |
| DAIKIN | FNQ 60 A | 5A | KIT0001400 |
| DAIKIN | FWB-BT 02 | 2A | KIT0001100 |
| DAIKIN | FWB-BT 03 | 2A | KIT0001100 |
| DAIKIN | FWB-BT 04 | 2A | KIT0001100 |
| DAIKIN | FWB-BT 05 | 5A | KIT0001400 |
| DAIKIN | FWB-BT 06 | 5A | KIT0001400 |
| DAIKIN | FWB-BT 07 | 5A | KIT0001400 |
| DAIKIN | FWB-BT 08 | 6A | KIT0001500 |
| DAIKIN | FWB-BT 09 | 6A | KIT0001500 |
| DAIKIN | FWB-BT 10 | 6A | KIT0001500 |
| DAIKIN | FWD-AF 08 | 5A | KIT0001400 |
| DAIKIN | FWD-AF 10 | 5A | KIT0001400 |
| DAIKIN | FWD-AT 08 | 5A | KIT0001400 |
| DAIKIN | FWD-AT 10 | 5A | KIT0001400 |
| DAIKIN | FWE03DAFN5V3 | 2A | KIT0001100 |
| DAIKIN | FWE03DATN5V3 | 2A | KIT0001100 |
| DAIKIN | FWE04DAFN5V3 | 2A | KIT0001100 |
| DAIKIN | FWE04DATN5V3 | 2A | KIT0001100 |
| DAIKIN | FWE05DAFN5V3 | 2A | KIT0001100 |
| DAIKIN | FWE05DATN5V3 | 2A | KIT0001100 |
| DAIKIN | FWE06DAFN5V3 | 5A | KIT0001400 |
| DAIKIN | FWE06DATN5V3 | 5A | KIT0001400 |
| DAIKIN | FWE07DAFN5V3 | 6B | KIT0001510 |
| DAIKIN | FWE07DATN5V3 | 6B | KIT0001510 |
| DAIKIN | FWE08DAFN5V3 | 6B | KIT0001510 |



| Marca | MODELLO | MODELLO CLIMABOX | CODICE CLIMABOX |
|--------|--------------|------------------|-----------------|
| DAIKIN | FWE08DATN5V3 | 6B | KIT0001510 |
| DAIKIN | FWE10DAFN5V3 | 6B | KIT0001510 |
| DAIKIN | FWE10DATN5V3 | 6B | KIT0001510 |
| DAIKIN | FWE11DAFN5V3 | 6B | KIT0001510 |
| DAIKIN | FWE11DATN5V3 | 6B | KIT0001510 |
| DAIKIN | FWM03DAF | 1B | KIT0001010 |
| DAIKIN | FWM04DAF | 5B | KIT0001410 |
| DAIKIN | FWM06DAF | 5B | KIT0001410 |
| DAIKIN | FWM25DAF | 1B | KIT0001010 |
| DAIKIN | FWM35DAF | 5B | KIT0001410 |
| DAIKIN | FWP-AT 02 | 2A | KIT0001100 |
| DAIKIN | FWP-AT 03 | 2A | KIT0001100 |
| DAIKIN | FWP-AT 04 | 2A | KIT0001100 |
| DAIKIN | FWP-AT 05 | 5A | KIT0001400 |
| DAIKIN | FWP-AT 06 | 5A | KIT0001400 |
| DAIKIN | FWP-AT 07 | 5A | KIT0001400 |
| DAIKIN | FWS-AT 03 | 1B | KIT0001010 |
| DAIKIN | FWS-AT 06 | 5B | KIT0001410 |
| DAIKIN | FXDQ-A 15 | 1C | KIT0001020 |
| DAIKIN | FXDQ-A 32 | 1C | KIT0001020 |
| DAIKIN | FXDQ-A 40 | 1A | KIT0001000 |
| DAIKIN | FXDQ-A 50 | 1A | KIT0001000 |
| DAIKIN | FXDQ-A 63 | 3A | KIT0001200 |
| DAIKIN | FXSA-A 100 | 6A | KIT0001500 |
| DAIKIN | FXSA-A 125 | 6A | KIT0001500 |
| DAIKIN | FXSA-A 140 | 6A | KIT0001500 |
| DAIKIN | FXSA-A 15 | 1C | KIT0001020 |
| DAIKIN | FXSA-A 20 | 1C | KIT0001020 |
| DAIKIN | FXSA-A 25 | 1C | KIT0001020 |
| DAIKIN | FXSA-A 32 | 1C | KIT0001020 |
| DAIKIN | FXSA-A 40 | 1A | KIT0001000 |
| DAIKIN | FXSA-A 50 | 1A | KIT0001000 |
| DAIKIN | FXSA-A 63 | 5A | KIT0001400 |
| DAIKIN | FXSA-A 80 | 5A | KIT0001400 |
| DAIKIN | FXSQ-A 15 | 1C | KIT0001020 |
| DAIKIN | FXSQ-A 20 | 1C | KIT0001020 |
| DAIKIN | FXSQ-A 25 | 1C | KIT0001020 |
| DAIKIN | FXSQ-A 32 | 1C | KIT0001020 |
| DAIKIN | FXSQ-A 40 | 1A | KIT0001000 |
| DAIKIN | FXSQ-A 50 | 1A | KIT0001000 |
| DAIKIN | FXSQ-A 63 | 3A | KIT0001200 |
| DAIKIN | FXSQ-A 80 | 5A | KIT0001400 |

SAMSUNG

| Marca | MODELLO | MODELLO CLIMABOX | CODICE CLIMABOX |
|---------|------------------|------------------|-----------------|
| SAMSUNG | AC 026 MNLDKH/EU | 1A | KIT0001000 |
| SAMSUNG | AC 035 MNLDKH/EU | 1A | KIT0001000 |
| SAMSUNG | AC 035 MNMDKH/EU | 4A | KIT0001300 |
| SAMSUNG | AC 035 RNMDKG/EU | 4A | KIT0001300 |
| SAMSUNG | AC 052 MNMDKH/EU | 4A | KIT0001300 |
| SAMSUNG | AC 052 RNMDKG/EU | 4A | KIT0001300 |
| SAMSUNG | AC 060 MNMDKH/EU | 4A | KIT0001300 |
| SAMSUNG | AC 071 MNMDKH/EU | 4A | KIT0001300 |
| SAMSUNG | AC 071 RNMDKG/EU | 4A | KIT0001300 |
| SAMSUNG | AC 090 MNMDKH/EU | 6A | KIT0001500 |
| SAMSUNG | AC 100 MNMDKH/EU | 6A | KIT0001500 |
| SAMSUNG | AE 022 MNLDEH/EU | 2A | KIT0001100 |
| SAMSUNG | AE 028 MNLDEH/EU | 2A | KIT0001100 |
| SAMSUNG | AE 036 MNLDEH/EU | 2A | KIT0001100 |
| SAMSUNG | AE 056 MNLDEH/EU | 3A | KIT0001200 |
| SAMSUNG | AM 017 FNLDEH/EU | 1A | KIT0001000 |
| SAMSUNG | AM 022 FNLDEH/EU | 1A | KIT0001000 |
| SAMSUNG | AM 022 FNMDEH/EU | 3A | KIT0001200 |
| SAMSUNG | AM 028 FNLDEH/EU | 1A | KIT0001000 |
| SAMSUNG | AM 028 FNMDEH/EU | 3A | KIT0001200 |
| SAMSUNG | AM 036 FNLDEH/EU | 1A | KIT0001000 |
| SAMSUNG | AM 036 HNMPKH/EU | 4A | KIT0001300 |
| SAMSUNG | AM 045 HNMPKH/EU | 4A | KIT0001300 |
| SAMSUNG | AM 056 HNMPKH/EU | 4A | KIT0001300 |
| SAMSUNG | AM 090 HNMPKH/EU | 6A | KIT0001500 |

VISSMANN

| Marca | MODELLO | MODELLO CLIMABOX | CODICE CLIMABOX |
|----------|-----------------------------|------------------|-----------------|
| VISSMANN | Vitoclima 242-S D2035M1 | 1B | KIT0001010 |
| VISSMANN | Vitoclima 242-S D2050M1 | 5B | KIT0001410 |
| VISSMANN | Vitoclima 242-S D2071M1 | 6A | KIT0001500 |
| VISSMANN | Vitoclima 242-S D2100M1 | 5A | KIT0001400 |
| VISSMANN | Vitoclima 242-S D2125M1 | 6A | KIT0001500 |
| VISSMANN | Vitoclima 300-S/HE DF3028M2 | 1A | KIT0001000 |
| VISSMANN | Vitoclima 300-S/HE DF3035M2 | 1A | KIT0001000 |
| VISSMANN | Vitoclima 300-S/HE DF3053M2 | 3A | KIT0001200 |



| Marca | MODELLO | MODELLO CLIMABOX | CODICE CLIMABOX |
|-------|---------|------------------|-----------------|
| MITE | ST17151 | 1B | KIT0001010 |
| MITE | ST17153 | 5B | KIT0001410 |
| MITE | ST17155 | 6A | KIT0001500 |
| MITE | ST17157 | 6A | KIT0001500 |



| Marca | MODELLO | MODELLO CLIMABOX | CODICE CLIMABOX |
|-------|---------------|------------------|-----------------|
| HAIER | AD 25 S2SS1FA | 1B | KIT0001010 |
| HAIER | AD 35 S2SS1FA | 1B | KIT0001010 |
| HAIER | AD 50 S2SS1FA | 1B | KIT0001010 |
| HAIER | AD 71 S2SS1FA | 1B | KIT0001010 |

| Marca | MODELLO | MODELLO CLIMABOX | CODICE CLIMABOX |
|-----------|--------------|------------------|-----------------|
| PANASONIC | S-100 PF1E5A | 5A | KIT0001400 |
| PANASONIC | S-100 PF1E5B | 5A | KIT0001400 |
| PANASONIC | S-106 MF2E5A | 5A | KIT0001400 |
| PANASONIC | S-125 PF1E5A | 6A | KIT0001500 |
| PANASONIC | S-125 PF1E5B | 6A | KIT0001500 |
| PANASONIC | S-140 MF2E5A | 5A | KIT0001400 |
| PANASONIC | S-140 PF1E5A | 6A | KIT0001500 |
| PANASONIC | S-140 PF1E5B | 6A | KIT0001500 |
| PANASONIC | S-15 MF2E5A | 1A | KIT0001000 |
| PANASONIC | S-160 MF2E5A | 5A | KIT0001400 |
| PANASONIC | S-22 MF2E5A | 1A | KIT0001000 |
| PANASONIC | S-28 MF2E5A | 1A | KIT0001000 |
| PANASONIC | S-36 MF2E5A | 1A | KIT0001000 |
| PANASONIC | S-36 PF1E5A | 1A | KIT0001000 |
| PANASONIC | S-36 PF1E5B | 1A | KIT0001000 |
| PANASONIC | S-36 PN1E5A | 1A | KIT0001000 |
| PANASONIC | S-36 PN1E5B | 1A | KIT0001000 |
| PANASONIC | S-45 MF2E5A | 1A | KIT0001000 |
| PANASONIC | S-45 PF1E5A | 1A | KIT0001000 |
| PANASONIC | S-45 PF1E5B | 1A | KIT0001000 |
| PANASONIC | S-45 PN1E5A | 1A | KIT0001000 |
| PANASONIC | S-45 PN1E5B | 1A | KIT0001000 |
| PANASONIC | S-50 PF1E5A | 1A | KIT0001000 |
| PANASONIC | S-50 PF1E5B | 1A | KIT0001000 |
| PANASONIC | S-50 PN1E5A | 1A | KIT0001000 |
| PANASONIC | S-50 PN1E5B | 1A | KIT0001000 |
| PANASONIC | S-56 MF2E5A | 1A | KIT0001000 |
| PANASONIC | S-60 MF2E5A | 3A | KIT0001200 |
| PANASONIC | S-60 PF1E5A | 3A | KIT0001200 |
| PANASONIC | S-60 PF1E5B | 3A | KIT0001200 |
| PANASONIC | S-60 PN1E5A | 5A | KIT0001400 |
| PANASONIC | S-60 PN1E5B | 5A | KIT0001400 |
| PANASONIC | S-71 PF1E5A | 3A | KIT0001200 |
| PANASONIC | S-71 PF1E5B | 3A | KIT0001200 |
| PANASONIC | S-71 PN1E5A | 5A | KIT0001400 |
| PANASONIC | S-71 PN1E5B | 5A | KIT0001400 |
| PANASONIC | S-73 MF2E5A | 3A | KIT0001200 |
| PANASONIC | S-90 MF2E5A | 5A | KIT0001400 |

Unical®

| Marca | MODELLO | MODELLO CLIMABOX | CODICE CLIMABOX |
|--------|-----------|------------------|-----------------|
| UNICAL | CN 09 18H | 2A | KIT0001100 |
| UNICAL | CN 09 24H | 5A | KIT0001400 |
| UNICAL | CN 09 36H | 6A | KIT0001500 |
| UNICAL | CN 09 48H | 6A | KIT0001500 |
| UNICAL | CN 09 60H | 6A | KIT0001500 |
| UNICAL | CN 10 18H | 2A | KIT0001100 |
| UNICAL | CN 10 24H | 5A | KIT0001400 |
| UNICAL | CN 10 30H | 6A | KIT0001500 |
| UNICAL | CN 10 36H | 6A | KIT0001500 |
| UNICAL | CN 10 48H | 6A | KIT0001500 |
| UNICAL | CN 10 60H | 6A | KIT0001500 |

TOSHIBA

| Marca | MODELLO | MODELLO CLIMABOX | CODICE CLIMABOX |
|---------|-------------------|------------------|-----------------|
| TOSHIBA | RAS-M 07 U2DVG-E | 1A | KIT0001000 |
| TOSHIBA | RAS-M 07-G3DV-E | 1A | KIT0001000 |
| TOSHIBA | RAS-M 07-G3DV-ND | 1A | KIT0001000 |
| TOSHIBA | RAS-M 07-G3DV-TR | 1A | KIT0001000 |
| TOSHIBA | RAS-M 10 U2DVG-E | 1A | KIT0001000 |
| TOSHIBA | RAS-M 10-G3DV-E | 1A | KIT0001000 |
| TOSHIBA | RAS-M 10-G3DV-ND | 1A | KIT0001000 |
| TOSHIBA | RAS-M 10-G3DV-TR | 1A | KIT0001000 |
| TOSHIBA | RAS-M 13 U2DVG-E | 1A | KIT0001000 |
| TOSHIBA | RAS-M 13-G3DV-E | 1A | KIT0001000 |
| TOSHIBA | RAS-M 13-G3DV-ND | 1A | KIT0001000 |
| TOSHIBA | RAS-M 13-G3DV-TR | 1A | KIT0001000 |
| TOSHIBA | RAS-M 16 U2DVG-E | 3A | KIT0001200 |
| TOSHIBA | RAS-M 22 U2DVG-E | 5B | KIT0001410 |
| TOSHIBA | RAS-M 24 U2DVG-E | 5B | KIT0001410 |
| TOSHIBA | RAS-M16G3DV-ND | 3A | KIT0001200 |
| TOSHIBA | RAS-M16G3DV-TR | 3A | KIT0001200 |
| TOSHIBA | RAV-RM 1101 BTP-E | 6A | KIT0001500 |
| TOSHIBA | RAV-RM 1401 BTP-E | 6A | KIT0001500 |
| TOSHIBA | RAV-RM 301 SDT-E | 3A | KIT0001200 |
| TOSHIBA | RAV-RM 401 SDT-E | 3A | KIT0001200 |
| TOSHIBA | RAV-RM 561 BTP-E | 1A | KIT0001000 |
| TOSHIBA | RAV-RM 561 SDT-E | 3A | KIT0001200 |

TOSHIBA

| Marca | MODELLO | MODELLO CLIMABOX | CODICE CLIMABOX |
|---------|-------------------|------------------|-----------------|
| TOSHIBA | RAV-RM 801 BTP-E | 5A | KIT0001400 |
| TOSHIBA | RAV-SM 1106 BTP-E | 6A | KIT0001500 |
| TOSHIBA | RAV-SM 1406 BTP-E | 6A | KIT0001500 |
| TOSHIBA | RAV-SM 1606 BTP-E | 6A | KIT0001500 |
| TOSHIBA | RAV-SM 304 SDT-E | 3A | KIT0001200 |
| TOSHIBA | RAV-SM 404 SDT-E | 3A | KIT0001200 |
| TOSHIBA | RAV-SM 406 BTP-E | 1A | KIT0001000 |
| TOSHIBA | RAV-SM 454 SDT-E | 3A | KIT0001200 |
| TOSHIBA | RAV-SM 456 BTP-E | 1A | KIT0001000 |
| TOSHIBA | RAV-SM 564 SDT-E | 3A | KIT0001200 |
| TOSHIBA | RAV-SM 566 BTP-E | 1A | KIT0001000 |
| TOSHIBA | RAV-SM 806 BTP-E | 5A | KIT0001400 |

SHARP

| Marca | MODELLO | MODELLO CLIMABOX | CODICE CLIMABOX |
|-------|-----------|------------------|-----------------|
| SHARP | GB-X18 JR | 2A | KIT0001100 |
| SHARP | GB-X24 JR | 3A | KIT0001200 |
| SHARP | GB-X36 JR | 6A | KIT0001500 |

| Marca | MODELLO | MODELLO CLIMABOX | CODICE CLIMABOX |
|---------------|--------------|------------------|-----------------|
| FUJI ELECTRIC | RDG 12 KLLAP | 1A | KIT0001000 |
| FUJI ELECTRIC | RDG 12 LHTBP | 4A | KIT0001300 |
| FUJI ELECTRIC | RDG 12 LLTB | 2A | KIT0001100 |
| FUJI ELECTRIC | RDG 12 LSLAP | 1A | KIT0001000 |
| FUJI ELECTRIC | RDG 14 KLLAP | 1A | KIT0001000 |
| FUJI ELECTRIC | RDG 14 LHTBP | 4A | KIT0001300 |
| FUJI ELECTRIC | RDG 14 LLTB | 2A | KIT0001100 |
| FUJI ELECTRIC | RDG 14 LSLAP | 1A | KIT0001000 |
| FUJI ELECTRIC | RDG 18 KLLAP | 3A | KIT0001200 |
| FUJI ELECTRIC | RDG 18 LHTBP | 4A | KIT0001300 |
| FUJI ELECTRIC | RDG 18 LLTB | 5A | KIT0001400 |
| FUJI ELECTRIC | RDG 18 LSLAP | 3A | KIT0001200 |
| FUJI ELECTRIC | RDG 24 LHTBP | 4A | KIT0001300 |
| FUJI ELECTRIC | RDG 30 LHTBP | 4A | KIT0001300 |
| FUJI ELECTRIC | RDG 36 LHTBP | 6A | KIT0001500 |
| FUJI ELECTRIC | RDG 45 LHTBP | 6A | KIT0001500 |
| FUJI ELECTRIC | RDG 54 LHTBP | 6A | KIT0001500 |
| FUJI ELECTRIC | RDG 9 KLLAP | 1A | KIT0001000 |

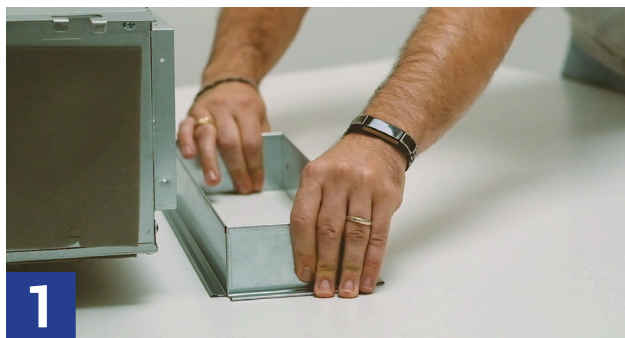
| Marca | MODELLO | MODELLO CLIMABOX | CODICE CLIMABOX |
|------------|----------|------------------|-----------------|
| THERMOMECC | SCLZ 18X | 1A | KIT0001000 |
| THERMOMECC | SCLZ 24 | 3A | KIT0001200 |
| THERMOMECC | SCLZ 30 | 5A | KIT0001400 |
| THERMOMECC | SCLZ 36 | 6A | KIT0001500 |
| THERMOMECC | SCLZ 48 | 6A | KIT0001500 |
| THERMOMECC | SCLZ 55 | 6A | KIT0001500 |

| Marca | MODELLO | MODELLO CLIMABOX | CODICE CLIMABOX |
|---------------------|--------------------|------------------|-----------------|
| MITSUBISHI ELECTRIC | PEAD M 35 JA | 3A | KIT0001200 |
| MITSUBISHI ELECTRIC | PEAD M 50 JA | 3A | KIT0001200 |
| MITSUBISHI ELECTRIC | PEAD M 60 JA | 5A | KIT0001400 |
| MITSUBISHI ELECTRIC | PEAD M 71 JA | 5A | KIT0001400 |
| MITSUBISHI ELECTRIC | PEFY-P 15 VMS 1-E | 1A | KIT0001000 |
| MITSUBISHI ELECTRIC | PEFY-P 20 VMR-E-L | 1B | KIT0001010 |
| MITSUBISHI ELECTRIC | PEFY-P 20 VMS 1-E | 1A | KIT0001000 |
| MITSUBISHI ELECTRIC | PEFY-P 25 VMR-E-L | 1B | KIT0001010 |
| MITSUBISHI ELECTRIC | PEFY-P 25 VMS 1-E | 1A | KIT0001000 |
| MITSUBISHI ELECTRIC | PEFY-P 32 VMR-E-L | 1B | KIT0001010 |
| MITSUBISHI ELECTRIC | PEFY-P 32 VMS 1-E | 1A | KIT0001000 |
| MITSUBISHI ELECTRIC | PEFY-P 40 VMA-E | 3A | KIT0001200 |
| MITSUBISHI ELECTRIC | PEFY-P 40 VMS 1-E | 3A | KIT0001200 |
| MITSUBISHI ELECTRIC | PEFY-P 50 VMA-E | 3A | KIT0001200 |
| MITSUBISHI ELECTRIC | PEFY-P 50 VMS 1-E | 3A | KIT0001200 |
| MITSUBISHI ELECTRIC | PEFY-P 63 VMA-E | 5A | KIT0001400 |
| MITSUBISHI ELECTRIC | PEFY-P 63 VMS 1-E | 5A | KIT0001400 |
| MITSUBISHI ELECTRIC | PEFY-P 71 VMA-E | 5A | KIT0001400 |
| MITSUBISHI ELECTRIC | PEFY-P 80 VMA-E | 5A | KIT0001400 |
| MITSUBISHI ELECTRIC | PEFY-WP 15 VMS 1-E | 1A | KIT0001000 |
| MITSUBISHI ELECTRIC | PEFY-WP 20 VMA-E | 1A | KIT0001000 |
| MITSUBISHI ELECTRIC | PEFY-WP 20 VMS 1-E | 1A | KIT0001000 |
| MITSUBISHI ELECTRIC | PEFY-WP 25 VMA-E | 3A | KIT0001200 |
| MITSUBISHI ELECTRIC | PEFY-WP 25 VMS 1-E | 1A | KIT0001000 |
| MITSUBISHI ELECTRIC | PEFY-WP 32 VMA-E | 3A | KIT0001200 |
| MITSUBISHI ELECTRIC | PEFY-WP 32 VMS 1-E | 3A | KIT0001200 |
| MITSUBISHI ELECTRIC | PEFY-WP 40 VMA-E | 5A | KIT0001400 |
| MITSUBISHI ELECTRIC | PEFY-WP 40 VMS 1-E | 3A | KIT0001200 |
| MITSUBISHI ELECTRIC | PEFY-WP 50 VMA-E | 5A | KIT0001400 |
| MITSUBISHI ELECTRIC | PEFY-WP 50 VMS 1-E | 5A | KIT0001400 |
| MITSUBISHI ELECTRIC | SEZ-M 35 DAL | 3A | KIT0001200 |
| MITSUBISHI ELECTRIC | SEZ-M 50 DAL | 3A | KIT0001200 |
| MITSUBISHI ELECTRIC | SEZ-M 60 DAL | 5A | KIT0001400 |
| MITSUBISHI ELECTRIC | SEZ-M 71 DAL | 5A | KIT0001400 |



| Marca | MODELLO | MODELLO CLIMABOX | CODICE CLIMABOX |
|---------|---------------|------------------|-----------------|
| FUJITSU | ARXG 12 KHTAP | 4A | KIT0001300 |
| FUJITSU | ARXG 14 KHTAP | 4A | KIT0001300 |
| FUJITSU | ARYG 12 LSLAP | 3A | KIT0001200 |
| FUJITSU | ARYG 12-LLTB | 3A | KIT0001200 |
| FUJITSU | ARYG 14 LHTBP | 4A | KIT0001300 |
| FUJITSU | ARYG 14 LSLAP | 3A | KIT0001200 |
| FUJITSU | ARYG 14-LLTB | 3A | KIT0001200 |
| FUJITSU | ARYG 18 LHTBP | 4A | KIT0001300 |
| FUJITSU | ARYG 18 LSLAP | 5A | KIT0001400 |
| FUJITSU | ARYG 18-LLTB | 5A | KIT0001400 |
| FUJITSU | ARYG 24 LHTBP | 4A | KIT0001300 |
| FUJITSU | ARYG 30 LHTBP | 4A | KIT0001300 |

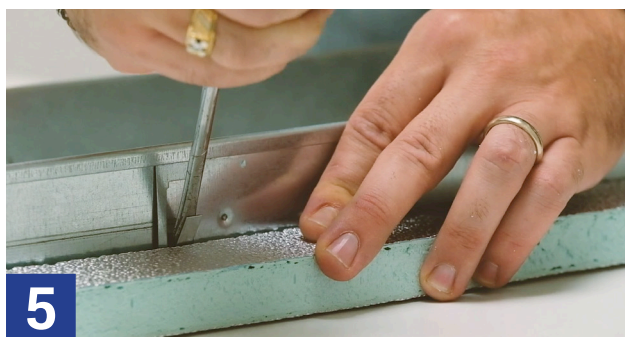
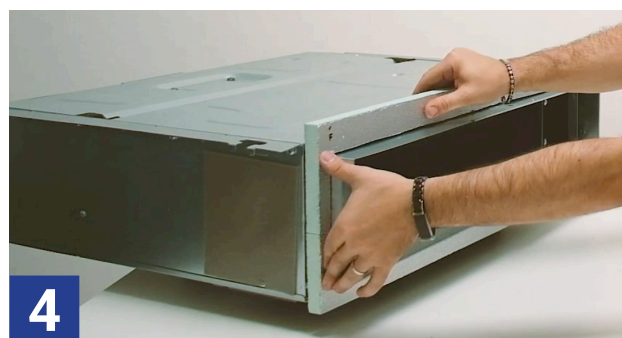
ISTRUZIONI MONTAGGIO CLIMABOX



Prendere la flangia rettangolare in acciaio zincato e regolarla sulle dimensioni della bocca di mandata della macchina. Usala la flangia come dima per segnare le linee di taglio su uno dei 2 pannelli preisolati.



Tagliare il pannello con il cutter e inserire la flangia estensibile.



Bloccare il pannello sulla flangia con le apposite alette e poi sigillare con il silicone.



SILICONARE LA FLANGIA sul pannello per garantire la tenuta dell'aria



Prendere il secondo pannello, segnare la posizione dei collarini e poi con il cutter fare i fori. ATTENZIONE: i nuovi collarini sono realizzati per essere sia maschio per tubo flessibile sia femmina per l'accoppiamento con le serrande motorizzate Opal. Si consiglia di verificare quale delle 2 opzioni è quella corretta prima di forare il pannello.





9

Se serve il by-pass o degli attacchi supplementari per il tubo flessibile, sempre con il cutter, tagliare le pre-tranciate laterali e poi inserire nei fori i collarini. (Collarini speciali non forniti di serie).



10

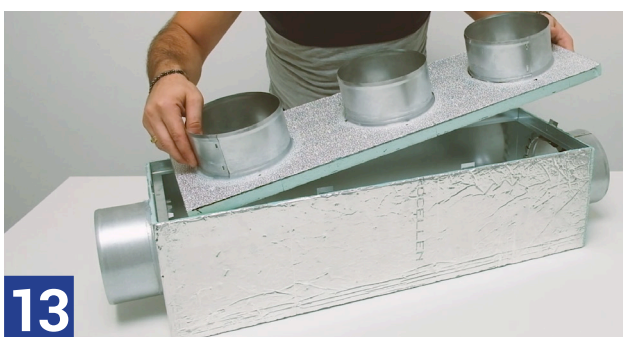


11

Bloccare i collarini piegando le alette e siliconare con cura per garantire la tenuta dell'aria.

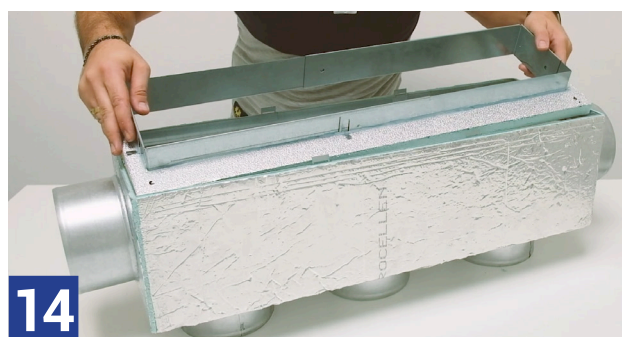


12



13

Montare i due pannelli sul box.

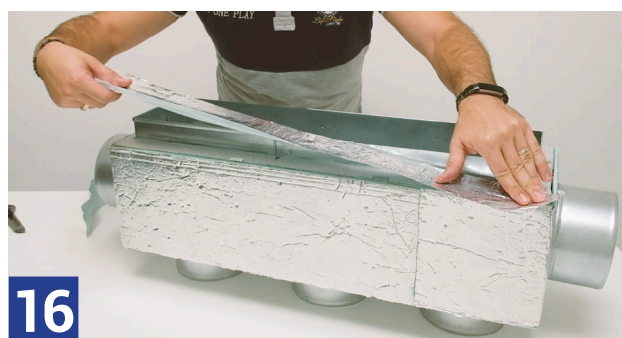


14



15

Bloccare i pannelli con le apposite alette del box e rifinire con il nastro adesivo di alluminio i bordi di accoppiamento pannello-box.



16